

# SG-L 6550 C

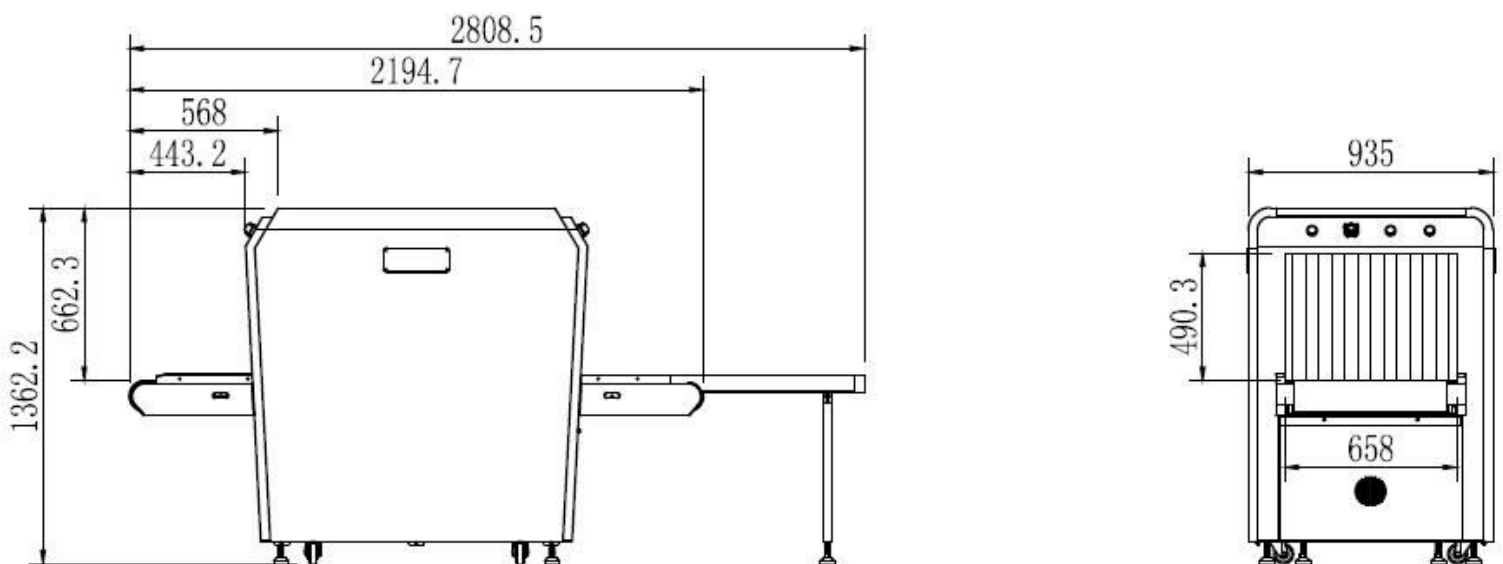
## X-Ray Baggage Scanner

### Product Highlights

- \* Two generator, two view perspective dual energy imaging
- \* Automatic built in test and self diagnosis
- \* Secure access Key
- \* Uninterruptable power supply(UPS)
- \* Threat alert and material classification
- \* Auto arching
- \* Network-Ready
- \* Energy saving design
- \* One key turn off
- \* Drugs and explosives inspection
- \* Indication of the date and time



### Dimensional Drawing



### Important Sizes :

Product Size: 2808.5\*935\*1362.2mm (L × W × H)

Tunnel Size: 668\* 490.3mm (width × height)

## General Specifications

- Wire Resolution
- Penetration resolution
- Spatial resolution
- Penetration
- Resolution of organic matter
- Grayscale and mixture resolution
- Resolution of inorganic objects
- Effective material resolution
- X-Ray dosage each inspection
- Boundary Leakage
- S/N ratio
- Conveyor speed
- Conveyor max load
- Power consumption
- Safety performance requirements
- EMC requirements
- Electrical safety
- Environmental applicability
- Leakage current
- Film Safety
- Weight
- Operation temperature/Humidity
- Storage temperature/Humidity
- Atmospheric pressure
- Operation Power
- Operation system

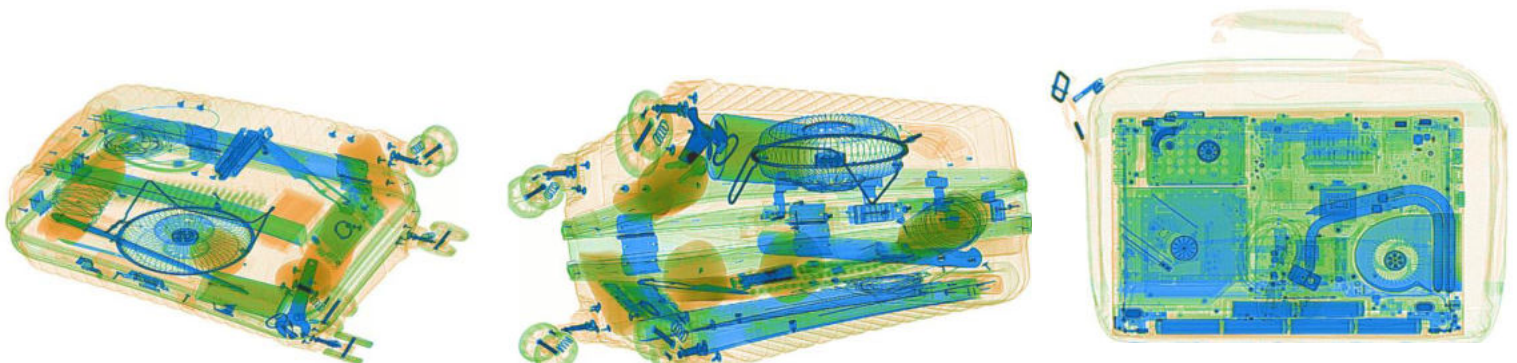
Typical AWG38(top view); Typical AWG38(side view)  
 Typical AWG32(top view); Typical AWG32(side view)  
 Vertical:1.0mm, horizontal:1.0mm(top view); Vertical:1.3mm, horizontal:1.3mm (side view)  
 34mm(top view); 34mm(side view)  
 1 - 120 mm(top view); 1 - 120 mm(side view)  
 1 - 60mm(top view); 1-60 mm(side view)  
 0.2-14mm(top view); 0.2-14 mm(side view)  
 Meet the requirements of GB15208.1-2005  
 $\leq 4.8 \mu\text{Sv}(\text{uGy})$   
 $\leq 0.5 \mu\text{Sv} / \text{h}(\text{uGy/h})$   
 $< 60\text{dB}$   
 0.2m/s  
 150kg  
 1.0KVA  
 Meet the requirements of GB15208.1-2005  
 Meet the requirements of GB15208.1-2005  
 Meet the requirements of GB15208.1-2005  
 Meet the requirements of GB15208.1-2005  
 $\leq 5.0\text{mA}$   
 Guarantee ASA/ISO1600 Film  
 740kg  
 $5^{\circ}\text{C} - 40^{\circ}\text{C} / 0\% - 90\%$   
 $-20^{\circ}\text{C} - 60^{\circ}\text{C} / 10\% - 90\%$   
 $86\text{kPa} - 106\text{kPa}$   
 $\text{AC}220\text{V}(\pm 10\% - 15\%) 50 \pm 3\text{Hz}$   
 Windows X

## General Specifications

- X ray generator
- Electric roller
- Computer
- Monitor
- Operation console

160KV, oil cooling, from top to bottom  
 Three-phase  
 CPU: Intel Celeron 2.70GHz, Hard drive: 2T, Storage : 4G  
 17" LED screen, resolution: 1280\*1024 pixels  
 Double screen console

## Scanned images



## Functional characteristics

■ Power-on self-test	With the function of fault self-check, automatically judge the fault and prompt the fault code information in time.
■ Image processing	With the function of Color/BW, negative, high/low penetration, organic /inorganic stripping, general enhancement, and pseudo color, etc.
■ Image Recall	30 preceding images recallable.
■ The number of images stored	Up to 10,000 images stored automatically.
■ Image management	With the functions of image information query, open, export and print, 6 image formats can be exported (JPG, BMP, XF, PNG, TIFF, GIF )
■ Operator management	Operators can be added and deleted, and operator names, groups, passwords, enabled status can be modified, and usage logs can be exported.
■ Dangerous goods image insertion	TIP insertion pictures can be added and deleted, TIP enable status, injection interval, floating range, motion determination time, and stationary determination time can be set; the user can check the operator by recording information.
■ Equipment diagnosis	Key components of equipment can be diagnosed through the diagnostic interface, including detector, motor positive and negative rotation, infrared sensor, special keyboard, etc.
■ System Settings	Programmable key, imaging display (horizontal, vertical image, maximum magnification, display recovery), scanning mode setting (two-way, direction, strong scanning, energy saving), auxiliary inspection (difficult to penetrate, explosives, drugs), luggage counter function Settings.
■ System equipment information	Display software version, equipment model, factory number, scan count, power on time, beam out time, image file storage capacity and other information. Able to conduct automatic through-baggage training for new operators.
■ Training function	Able to conduct automatic through-baggage training for new operators.

## Compliance

■ International	<ul style="list-style-type: none"> <li>* ISO19001 ; ISO14001 ; ISO27001 ; OHSMS18001 ;</li> <li>* CE , ROHS, FCC, REACH</li> </ul>
■ National	<ul style="list-style-type: none"> <li>* USA, FDA</li> <li>* Health Inspection Report</li> <li>* Computer Software Copyright Registration Certificate</li> <li>* Software Product Registration Certificate</li> <li>* Radiation Safety Certificate from Ministry of Public Security</li> <li>* Quality Certification from Safety and Police Electronic Products Quality Inspection Center</li> <li>* Design patent certification</li> </ul>