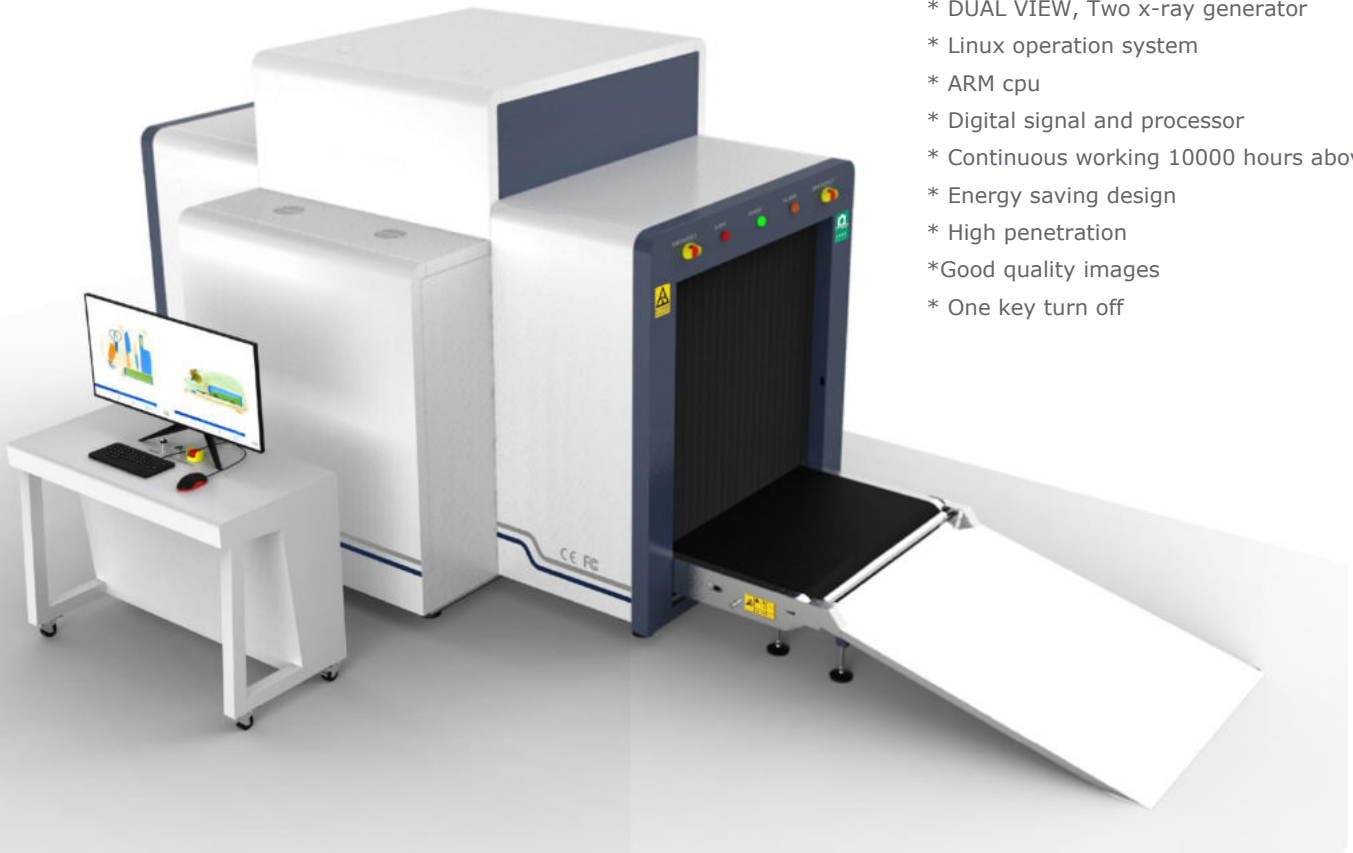


SG-L 100100 D

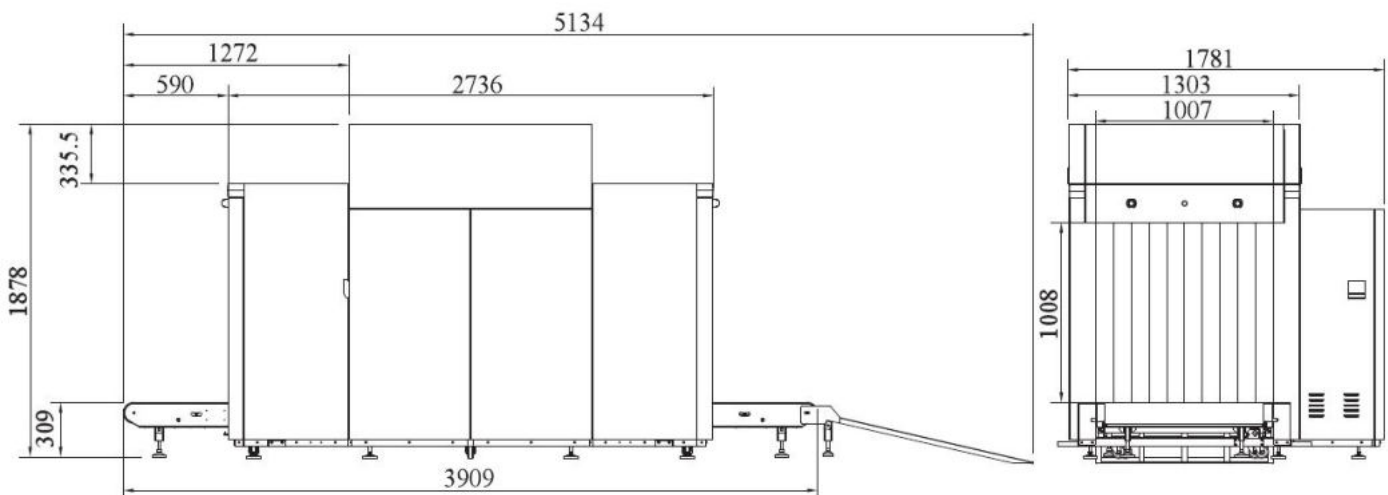
X-Ray Baggage Scanner

Product Highlights

- * DUAL VIEW, Two x-ray generator
- * Linux operation system
- * ARM cpu
- * Digital signal and processor
- * Continuous working 10000 hours above
- * Energy saving design
- * High penetration
- * Good quality images
- * One key turn off



Dimensional Drawing



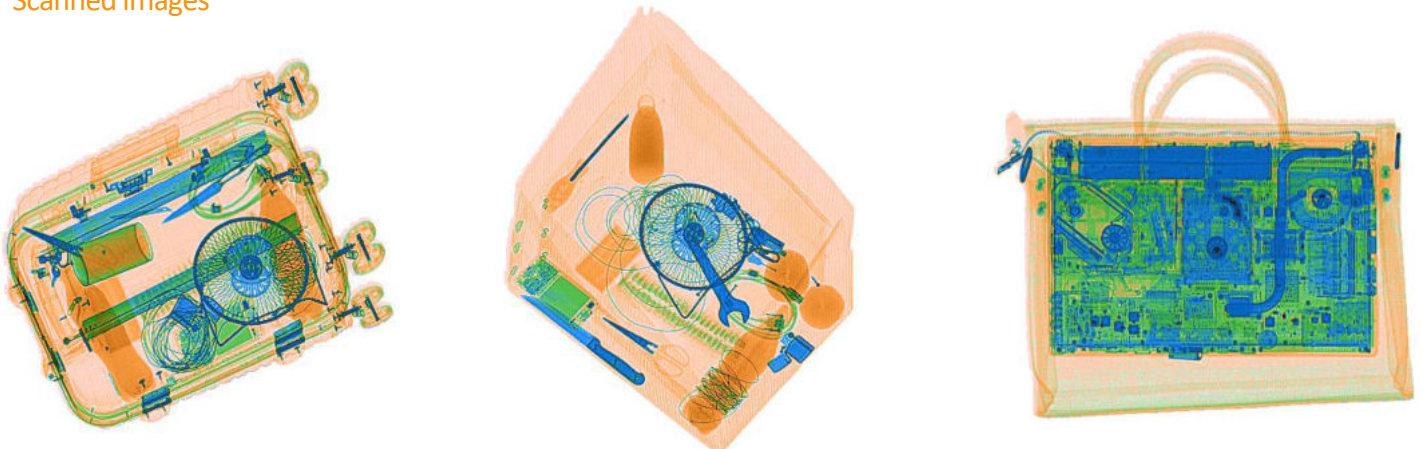
General Specifications

■ Wire Resolution	AWG40(top view); AWG40
■ Penetration resolution	AWG30(top view); AWG32(side view)
■ Spatial resolution	Vertical:1.0mm, horizontal:1.3mm(top view); Vertical:0.8mm, horizontal:1.3mm (side)
■ Penetration	34mm(top view); 36mm(side view)
■ Resolution of organic matter	1-120mm
■ Grayscale and mixture resolution	1-60mm
■ Resolution of inorganic objects	0.2-14mm
■ Effective material resolution	Meet the requirements of GB 15208.1-2005
■ X-Ray dosage each inspection	$\leq 2.5\mu\text{Sv}$ (uGy)
■ Boundary Leakage	$\leq 0.5\mu\text{Sv/h}$ (uGy/h)
■ S/N ratio	<60dB
■ Conveyor speed	0.2m/s
■ Conveyor max load	200kg
■ Power consumption	0.85K W
■ Safety performance requirements	Meet the requirements of GB 15208.1-2005
■ E M C requirements	Meet the requirements of GB 15208.1-2005
■ Electrical safety	Meet the requirements of GB 15208.1-2005
■ Environmental applicability	Meet the requirements of GB 15208.1-2005
■ Leakage current	$\leq 5.0\text{mA}$
■ Film Safety	Guarantee ASA/I SO 1600 Film
■ Weight	1300kg
■ Operation temperature/Humidity	5°C-40°C/0%-90%
■ Storage temperature/Humidity	-20°C-60°C /10%-90%
■ Atmospheric pressure	86kPa-106kPa AC
■ Operation Power	220V($\pm 10\%$ -15%) 50 \pm 3Hz
■ Operation system	LI NU X

Configuration

■ X ray generator	160K V, oil cooling, from top to bottom
■ Electric roller	One- phase
■ Computer	Operating: 1G, Storage : 8G
■ Monnitor	34" LE D screen, resolution: 3440*1440 pixels
■ Operation console	As photo

Scanned images



Functional characteristics

<ul style="list-style-type: none"> ■ Power-on self-test 	With the function of fault self-check, automatically judge the fault and prompt the fault code information in time.
<ul style="list-style-type: none"> ■ Image processing 	With the function of Color/ B W, negative, high/low penetration, organic /inorganic stripping, general enhancement, and pseudo color, etc.
<ul style="list-style-type: none"> ■ Image Recall 	30 preceding images recallable.
<ul style="list-style-type: none"> ■ The number of images stored 	Up to 10,00 images stored automatically.
<ul style="list-style-type: none"> ■ Real-time curve 	The real-time curve can be used to detect whether the acquisition system and components work normally.
<ul style="list-style-type: none"> ■ Time setting 	System time can be set
<ul style="list-style-type: none"> ■ Probe setting 	It can realize the manual deletion of the low and low energy detection board dead pixels, and display the deleted dead pixels in the display area.
<ul style="list-style-type: none"> ■ Ray source setting 	There are two source and analog source control modes, the source parameters of the digital source can be set.
<ul style="list-style-type: none"> ■ Alarm system 	The alarm function can be activated and deactivated, and the alarm type of the alarm box, sound and light alarm can be selected, and the sensitivity, minimum absorption rate, maximum absorption rate, and alarm duration can be set.
<ul style="list-style-type: none"> ■ Troubleshooting 	It can realize whether the components such as the entrance and exit light barrier, side panel switch, emergency stop switch and light source are normal, and display the standard value and current value of the detection voltage
<ul style="list-style-type: none"> ■ Image setting 	The drum running control direction and the image display moving direction can be set.
<ul style="list-style-type: none"> ■ Software registration 	It can realize software registration function and has serial number, registration code, registration status and system time information display.
<ul style="list-style-type: none"> ■ User login 	Log in by entering different user name and passwords , only when logging in can you make other settings.
<ul style="list-style-type: none"> ■ User management 	You can add, delete, edit the user name and password , set the user level to restore the deleted user.
<ul style="list-style-type: none"> ■ Authority management 	Different default permissions can be set according to user level.
<ul style="list-style-type: none"> ■ language settings 	The system language can be set to switch between Turkish and English.
<ul style="list-style-type: none"> ■ Log management 	User operations can be monitored to query user actions.
<ul style="list-style-type: none"> ■ About 	The version and device number can be displayed.
<ul style="list-style-type: none"> ■ T I P report 	The report can be generated by the tip operation after the tip insertion function is turned on, and the content of the report: user name, number of tip insertions, number of tags, false positive rate, probability of detection, probability of false positives.
<ul style="list-style-type: none"> ■ Tip management 	It can be set to enable and disable the insertion of dangerous goods, and can set the identification time, Prompt time, insertion frequency, proportion of single items inserted into dangerous goods, add tip files and delete files.
<ul style="list-style-type: none"> ■ Document management 	It can query, open, and export the checked image.
<ul style="list-style-type: none"> ■ Function setting 	It can set log level, save the file time, whether to open the training function and setting the smart roller.
<ul style="list-style-type: none"> ■ Data setting 	Display system working hours, the total working hours of the ray source, the total number of system baggage and packages, and the total number of baggage packages this time, and clear the above data.
<ul style="list-style-type: none"> ■ System parameter setting 	It can select the exported data, pictures, and backup directory, select and adjust the motor type, detector type, whether to enable the debug mode, model, and gain, enter the corresponding IP address on network connection to realize sharing function, and have corresponding software to achieve system upgrade.

Compliance

<ul style="list-style-type: none"> ■ International 	*ISO19001 ; SO14001 ; ISO27001; OHSMS18001 ; CE , ROHS , FCC , REACH , USA , FDA
<ul style="list-style-type: none"> ■ National 	*Health Inspection Report *Computer Software Copyright Registration Certificate *Software Product Registration Certificate *Radiation Safety Certificate from Ministry of Public Security *Quality Certification from Safety and Police Electronic Products Quality Inspection Center *Design patent certification.